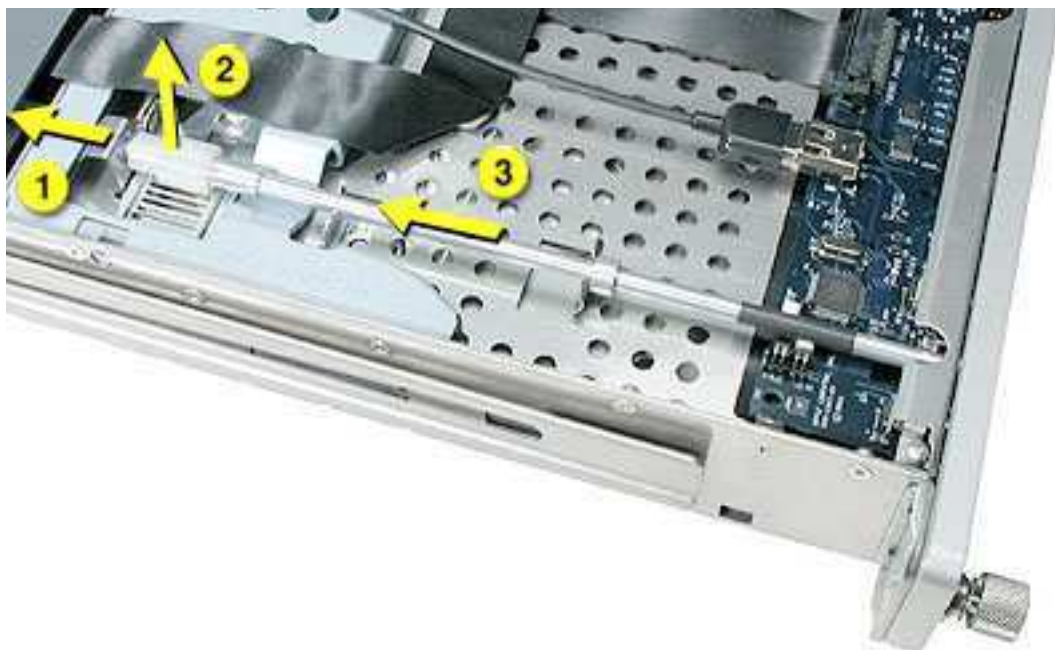


## Procedure

1. Pull back the latch to release the gear end of the locking mechanism rod.
2. Tilt up the gear end of the rod and remove the rod from the server.



3. If you are replacing the plastic gear on the end of the rod, slide the gear off the rod.

## Replacement Procedure

1. To install the gear, slide it onto the notched end of the locking rod, aligning the narrow end of the gear with the end of the rod.

**Note:** Make sure the rib inside the gear engages with the notch in the rod.

